

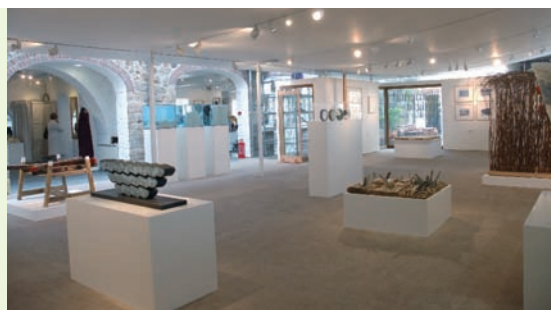


Willow sculpture
with Stefan Jennings
at Halberton
Primary school

Big Hand, Little Hand

Big Hand, Little Hand is The Devon Guild's scheme for placing makers and artists in schools and colleges. Through residencies with practising artists and makers, we aim to foster craft skills, design, practice, process and materials knowledge.

Recent school projects include figurative ceramics, ceramic sculpture, textiles (felt making, silk painting and screen printing), wood sculpture, paper, mosaic (panels and seating) and willow sculpture. Larger projects to make 'outdoor classrooms' include cob building and amphitheatre design.



The Devon Guild of Craftsmen is the South West's leading crafts organisation representing over 240 makers.

Our shop and gallery exhibitions are committed to increasing knowledge and appreciation of contemporary craft and design. We also undertake professional development and support for craftspeople and artists in the region.

The Jubilee Gallery (Photo: Carol Ballenger)



Wood sculpture with Nic Ridley at Okehampton Primary School

Residencies can be used for a variety of outcomes which include:

- Specialist help with GCSE and A level work
- Pupils and artists making a permanent artwork for installation in the school grounds
- Being creative and having fun during an arts week
- Learning about use of tools, materials and design

All BH, LH projects are a partnership between school, artist/maker and the Devon Guild. Funding is shared between the Devon Guild and the school.



Ceramic sculpture with Taja at John Kitto Community College



Silk painting with Isabella Whitworth at The King's School, Ottery St. Mary

Quilting, crochet and textile collage are **stitch based crafts** which can be adapted to suit anyone from beginners to advanced level practitioners. Materials are simple and inexpensive and offer many possibilities for school workshops.



Ceramics with Taja at Widcombe school

- Residencies are usually between 1 and 5 days
- The Devon Guild pays 50% of artist's fee
- School pays 50% of artist's fee plus materials costs and mileage
- Residencies are evaluated and documented by the Guild's Education Officer
- Work made during residencies (or photographs) may be exhibited in the Education Showcases at The Devon Guild of Craftsmen



Crochet with Sam Peirce



Mosaic with Michelle McQuinn
at The Maynard School



Printmaking with Jill Beagley
at Southbrook School

If you would like more information or would like to discuss an idea for a project please contact Phil de Burllet, tel. 01 626 832223, or e-mail phil.deburlet@crafts.org.uk

Images show recent examples of work produced in Devon schools. Supporting material is provided for all exhibitions and school parties are welcome to visit.